



**AuthenTec, Inc.**  
Personal Security for the Real World™

# Image Capture Application



Minutiae  
047 018 287  
106 021 192  
070 023 210  
053 024 000  
073 032 230  
108 032 428  
091 033 174  
058 039 248  
108 054 402  
125 059 400  
099 060 400  
070 061 256  
048 068 340  
065 070 338  
104 071 358  
115 075 358  
041 077 096  
123 079 384  
063 083 064  
053 091 052  
028 097 052  
084 100 031  
050 102 044  
103 106 050  
117 111 046  
104 118 282

## User's Manual

**2108 Rev 1.0**  
**11 SEP 00**



**AuthenTec, Inc.**  
**Post Office Box 2719**  
**Melbourne, Florida 32902-2719**  
**321-308-1300**  
**www . authentec . com**



2108 Rev 1.0(11SEP00)

AuthenTec welcomes your input. We try to make our publications useful, interesting, and informative, and we hope you will take the time to help us improve them. Please send any comments or suggestions by mail or e-mail.

#### **Disclaimer of Warranty**

THE SOFTWARE, INCLUDING INSTRUCTIONS FOR ITS USE, IS PROVIDED "AS IS" WITHOUT WARRANTY OF ANY KIND. AUTHENTEC FURTHER DISCLAIMS ALL IMPLIED WARRANTIES INCLUDING WITHOUT LIMITATION ANY IMPLIED WARRANTIES OF MERCHANTABILITY OR OF FITNESS FOR A PARTICULAR PURPOSE. THE ENTIRE RISK ARISING OUT OF THE USE OR PERFORMANCE OF THE SOFTWARE AND DOCUMENTATION REMAINS WITH YOU.

IN NO EVENT SHALL AUTHENTEC, ITS AUTHORS, OR ANYONE ELSE INVOLVED IN THE CREATION, PRODUCTION, OR DELIVERY OF THE SOFTWARE BE LIABLE FOR ANY DAMAGES WHATSOEVER (INCLUDING, WITHOUT LIMITATION, DAMAGE FOR LOSS OF BUSINESS PROFITS, BUSINESS INTERRUPTION, LOSS OF BUSINESS INFORMATION, OR OTHER PECUNIARY LOSS) ARISING OUT OF THE USE OF OR INABILITY TO USE THE SOFTWARE OR DOCUMENTATION, EVEN IF AUTHENTEC HAS BEEN ADVISED OF THE POSSIBILITY OF SUCH DAMAGES. BECAUSE SOME STATES OR COUNTRIES DO NOT ALLOW THE EXCLUSION OR LIMITATION OF LIABILITY FOR CONSEQUENTIAL OR INCIDENTAL DAMAGES, THE ABOVE LIMITATION MAY NOT APPLY TO YOU.

#### **U.S. Government Restricted Rights**

The software and documentation are provided with RESTRICTED RIGHTS. Use, duplication, or disclosure by the government is subject to restrictions as set forth in subparagraph (c)(1)(ii) of the Rights in Technical Data and Computer Software clause at DFARS 252.227-7013 or subparagraph (c)(1) and (2) of the Commercial Computer Software – Restricted Rights 48 CFR 52.227-19, as applicable. Manufacturer is AuthenTec, Inc., Melbourne, Florida 32901-2719. This Agreement is governed by the laws of the State of Florida.

**AuthenTec, Inc.**  
**Post Office Box 2719**  
**Melbourne, Florida 32902-2719**  
**321-308-1300**  
**www.authentec.com**  
**apps @ authentec . com**

AuthenTec, FingerLoc, Aware, Dynamic Optimization, TruePrint, the AuthenTec logotype, and the phrase "Personal Security for the Real World" are trademarks or registered trademarks of AuthenTec, Inc. Microsoft and Windows 98 are registered trademarks of Microsoft Corp. SecureSuite is a trademark of I/O Software, Inc. All other trademarks are the property of their respective owners.

#### **AuthenTec Image Capture Application** **2108 Rev 1.0 (11 SEP 00)**

Copyright © 2000 by AuthenTec, Inc. No part of this publication may be reproduced in any form or by any means without prior written permission. Printed in the United States of America.

The material in this publication is provided for information only. It is subject to change without notice. While reasonable efforts have been made to assure its accuracy, AuthenTec, Inc. assumes no liability resulting from errors or omissions in the document, or from the use of the information contained herein.

## Table of Contents

<b>INTRODUCTION .....</b>	<b>3</b>
<b>STARTING THE APPLICATION .....</b>	<b>4</b>
Fig: Locating the Image Capture Executable.....	4
Fig: Image Capture Main Screen.....	5
<b>PROGRAM SETTINGS .....</b>	<b>6</b>
Fig: Program Window Menu Selections.....	6
Fig: Selecting Output Directory.....	6
<b>CAPTURING IMAGES.....</b>	<b>8</b>
Fig: Capturing an Image.....	8
Fig: Saving the Captured Image.....	8

## Introduction

The **ImageCapture** application is a program that can be used by evaluators and developers of the AuthenTec Personal Authentication System (PAS) to capture single images of fingers. Unlike the Data Capture function in the Aware program, which displays a stream of images without regard to their degree of optimization, the Image Capture Application is designed to produce and capture a single, fully-optimized image.

Developers who wish to see and evaluate the image quality that can be delivered by the PAS to a host application using the Application Programming Interface (API) can use this program.

This application simplifies the developer's work by generating the same image output that would be obtained by using one of the native PAS APIs, without having to do any programming.

The **ImageCapture** application uses the features of the Fingerprint Services API to generate the image. However, identical results could also be obtained by using the High Performance API or the Convenience API.

## Starting the Application

The **ImageCapture** application can be started at any time after the AuthenTec software, version 4.0 or higher, has been installed. When installation was complete an icon for the **ImageCapture** program was placed on your desktop - simply double-click this icon to launch the application:



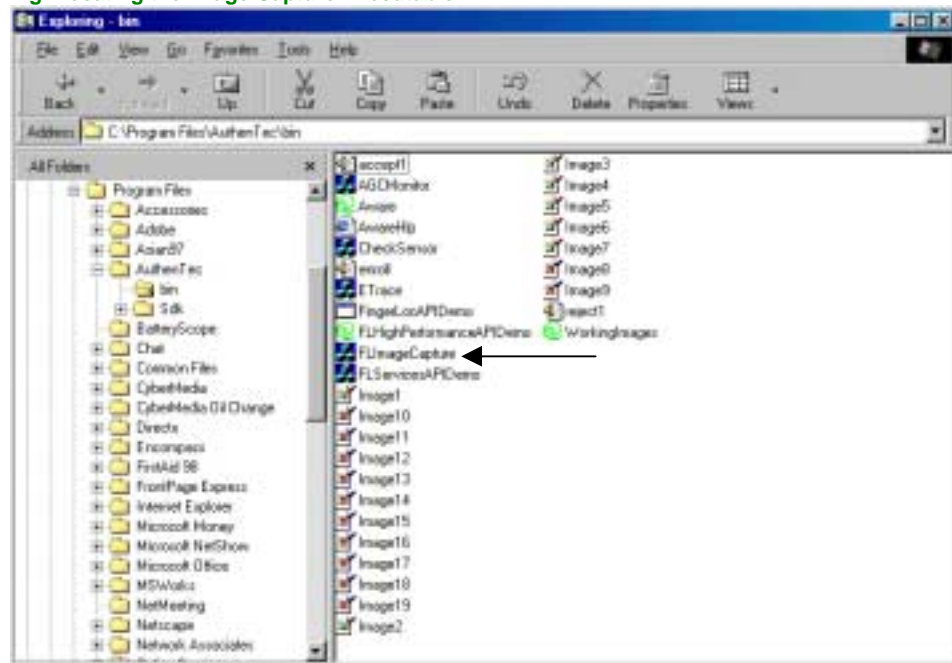
or...

If the AuthenTec software was installed using the default settings, the executable for this application is located in the directory named:

`c:\Program Files\AuthenTec\bin`

The executable is called **FLImageCapture**, as seen in the following illustration:

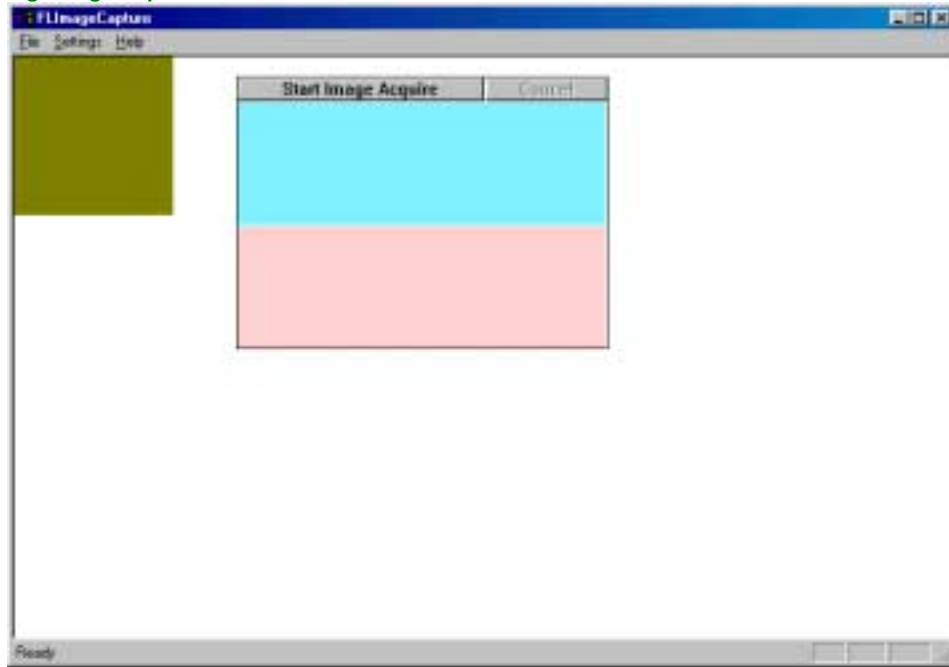
**Fig: Locating the Image Capture Executable**



Simply double-click **FLImageCapture** to launch the application.

The main program screen appears:

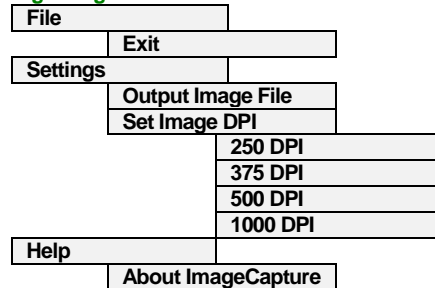
Fig: Image Capture Main Screen



## Program Settings

In the menu at the top of the program window, there are three pull-down menus that offer the selections shown in the following illustration:

**Fig: Program Window Menu Selections**

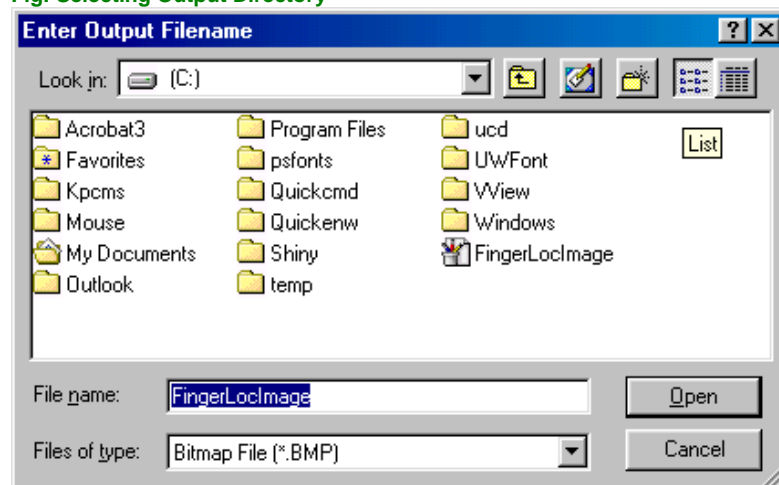


- ◆ **File > Exit** - exits the program
- ◆ **Settings >**
  - ◆ **Output Image File** – this allows the user to change the default filename and location in which images will be saved, as shown below. The program creates a default directory for saving images:

[c:\FLImageCapture Images](#)

but the user can change this to any desired directory.

**Fig: Selecting Output Directory**



**Set Image Dpi** – this changes the resolution of the image that is displayed or saved in the output file. The resolution settings are 250, 375, 500, and 1000 DPI. The raw image output of the sensor is always 250 DPI. The other resolutions are generated by interpolation of the 250 DPI raw image.

- ◆ **Help** – Reports the version number of the software.

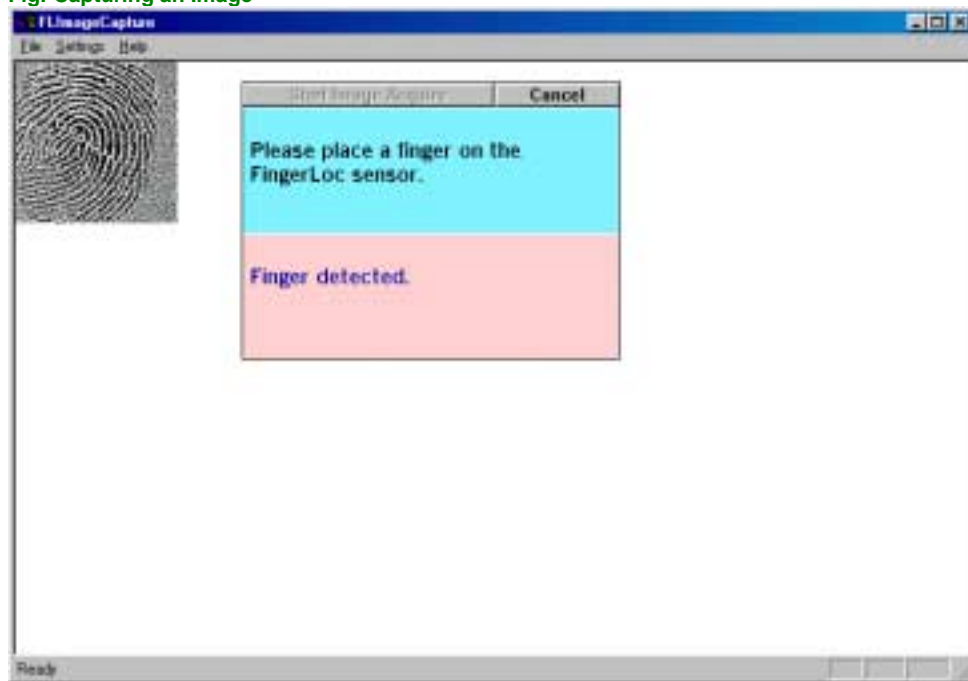


## Capturing Images

To start the image capture process, click the **Start Image Acquire** bar in the main window. Place a finger gently but firmly on the fingerprint sensor.

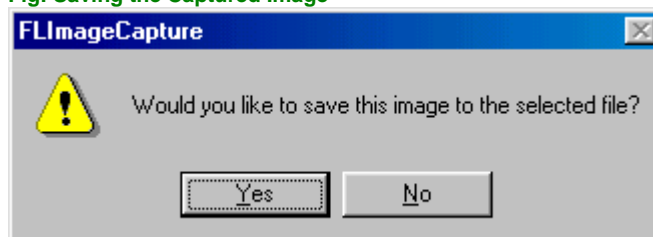
The program performs the optimization necessary to get the best image and displays it in the box at the upper left hand corner of the main window. This process may take a few seconds.

Fig: Capturing an Image



When the image has been fully optimized, the following dialog box appears:

Fig: Saving the Captured Image



If you would like to save the optimized image to the output file, click **Yes**. The image will be saved in Windows BMP file format. Click **No** to abandon this process and exit without effect to the main screen.

The **ImageCapture** operation can be stopped at any time by clicking on the **Cancel** bar at the top of the main window.



**AuthenTec, Inc.**  
**Post Office Box 2719**  
**Melbourne, Florida 32902-2719**  
**321-308-1300 (voice)**  
**321-308-1430 (fax)**  
[www.authentec.com](http://www.authentec.com)  
[apps@authentec.com](mailto:apps@authentec.com)