

Copyright © 2000 - 2004 Inspire-Tech Pte Ltd All rights reserved. This manual may not be copied, photocopied, reproduced, translated, or converted to any electronic or machine-readable form in whole or in part without prior written approval of Inspire-Tech Pte Ltd  
Part Number: ESUG040922

4<sup>th</sup> Edition: Sept 2004

For any feedback or questions, please email to  
[support@inspire-tech.com](mailto:support@inspire-tech.com)

## EasiSMS User Guide

### Content

1. Getting Started .....	1
2. Understanding the Menu & main functions .....	2
3. Managing Contacts .....	2
4. Changing Default settings .....	2
5. Initialising the modem/phone.....	2
6. Read received SMS from Phone/SIM card .....	3
7. Sending SMS .....	3
8. For Developers .....	4

### 1. Getting Started

#### How to start using EasiSMS?

Place EasiSMS.exe in your C:\ or any folder that you prefer. There are 2 ways to launch the program.

- 1) Launch command prompt and type easisms.exe
- 2) Double click on easisms.exe at your windows explorer and a command prompt window with menu will launch.

**Note:** For those who do not wish to use the menu, you can skip steps 2 – 7 and move on to Step 8.

#### Register Product

If you have purchased the software, please follow the steps below to register. For trial users, you can skip this step.

1. After you launch the command prompt window, type **easisms.exe /action=register**

```

C:\WINDOWS\System32\CMD.exe
Microsoft Windows XP [Version 5.1.2600]
Copyright 1985-2001 Microsoft Corp.
C:\Documents and Settings\sharon>cd c:\
C:\>easisms.exe /action=register
C:\>

```

2. Another screen will launch. Copy the information that appears on your screen **<Register EasiSMS: xxxxxx>** and send the details to [license@inspire-tech.com](mailto:license@inspire-tech.com)
3. Once we receive your email, we will send you the license key.



## 2. Understanding the Menu & main functions

When you launch EasiSMS at the command prompt window, you will see the following menu with 5 main functions. To move to the functions, type the 1<sup>st</sup> alphabet & press ENTER.

e.g. for Contacts: type **C** & press enter.

(**C**)ontacts - allows you to import or export your contact list via SIM or Phone.

(**D**)efault Settings - allow you to make changes to your country code, port number, screen color and whether you want to turn on the confirmation of command.

(**I**)nitialisation - allows you to start the GSM modem. This is not applicable for users who use infrared to connect to the PC and handphone.

(**R**)ead SMS - allows you to read incoming SMS that you have received.

(**S**)end SMS - allows you to send an SMS to one or multiple recipients.

(**Q**)uit - To quit EasiSMS.

## 3. Managing Contacts

### How to import or export Contacts?

4. Enter choice **C** at main menu to go into **Contacts**.
5. Enter your COM Port number or Enter **I** for using infra red or just press **Enter** for default.
6. Enter **1** to **Import Contacts From SIM**, **2** to **Import Contacts From Phone Memory**, **3** to **Export Contacts To SIM** and **4** to **Export Contacts To Phone**.  
**Note:** If you have turn on the confirmation of command in the default settings earlier, it will prompt you on whether you want to carry on with the procedure. Type **Y** for Yes to carry on or **N** for No to stop.
7. Press **Enter** to continue.

## 4. Changing Default settings

### How to set the settings of EasiSMS?

1. Enter choice **D** at the main menu to go into **Default settings**.
2. There are 4 settings for you to setup. You can press enter to skip the step & move on to the next one.
3. Enter the new country code if you want to change the current one. If not, press **Enter** to proceed.
4. Enter the new port number or **I** for infra red if you want to change the current one. If not, press **Enter** to proceed.
5. Enter the new screen color if you want to change the current one. If not, press **Enter** to proceed.
6. Enter **Y** for yes or **N** for No on whether you want to turn on the confirmation of command.  
**Note:** If the confirmation is **ON** and you just press **Enter**, the confirmation will be turned **OFF**.

## 5. Initialising the modem/phone

If you use infrared to connect your mobile phone to the PC, you don't need this step.

### How to initialize (except for infra red)?

1. Enter choice **I** at the main menu to **Initialize modem**.
2. Enter your COM Port number or Enter **I** for using infra red or just press **Enter** for default.
3. Enter the baud rate (speed) of the GSM modem.  
For baud rate, please check our web site for some of the list of modems/phones baud rate.  
**Note:** If you have turn on the confirmation of command earlier, it will prompt you on whether you want to carry on with the procedure. Type **Y** for Yes to carry on or **N** for No to stop.
4. Press **Enter** to continue.

## 6. Read received SMS from Phone/SIM card

### How to read received SMS?

1. Enter choice **R** at the main menu to **Read SMS**.
2. Enter **A** to read all messages sent or press any key to read only **New** messages.
3. Enter your COM Port number or Enter **I** for using infra red or just press **Enter** for default.  
**Note:** If you have turn on the confirmation of command earlier, it will prompt you on whether you want to send the SMS. Type **Y** for Yes to send the SMS or **N** for No to stop sending it out.
4. Press **Enter** to continue.

## 7. Sending SMS

### How to send SMS?

1. Enter choice **S** at the main menu to **Send SMS**.
2. Enter your COM Port number or Enter **I** for using infra red or just press **Enter** for default.
3. Enter the recipient's mobile number. For multiple recipients, you may use semi-colon as the separator. **E.g.** 91234567;97894561.  
**Note:** If you have a lot of contacts in a text file, you may just enter the path of the text file name. **E.g.** **C:\contacts.txt**
4. Enter the message that you want to send.  
**Note:** You can only enter up to **160** characters for normal SMS and up to **69** for Unicode SMS.
5. Press **Enter** to send.  
**Note:** If you have turn on the confirmation of command earlier, it will prompt you on whether you want to send the SMS. Type **Y** for Yes to send the SMS or **N** for No to stop sending it out.



## 8. For Developers

EasiSMS is a console-based application that accepts command line to execute different function.

If you intend to call EasiSMS from other applications to send out SMS, please ensure you type in the following commands.

### A. Country Code default settings

Before you link up your application with EasiSMS, you may want to set the country code settings. To change the country code, see step 3 above.

\* By default the country code is 65 (i.e. Singapore)

### B. To initialize modem

If you are running this application 24x7, you need to initialize the modem at least once when you power up the modem & the PC/Server. Once the modem has been initialized, this step is not necessary.

You can either follow **step 5** (see above) or directly type the command when you launch the DOS-prompt screen. Note: If you are using infrared to connect the mobile phone to the program, you can skip this step.

#### Command:

```
easisms.exe /action=init /stopbits=0 /port=1 /baud=9600
```

Variable Parameters

Parameters	Possible values	
Stopbits	Value	Meaning
	0	1 stopbits
	1	1.5 stopbits
	2	2 stopbits
Port	This is the COM Port Number. It is a numeric value from 1-255	
Baud	This is subject to each modem's baud rate. Some values include: 9600, 19200, 57600, 115200	

### C. To Send SMS

After completing step 7A & 7B, you can configure your application to call EasiSMS to send out SMS with this simple command. Please ensure you call EasiSMS at the correct directory.

#### Command:

```
easisms.exe /action=sendlog / port=1 / mobile=91234567 /msg=system message
```

Variable Parameters

Parameters	Possible values
Action	Sendlog
Port	This is the COM Port Number. It is a numeric value from 1-255 For Infrared, the value is IR i.e. port=IR
Mobile	Recipient's mobile number e.g. 91234567  For multiple recipients use semi-colon ';' to separate the numbers e.g. 91234567;97654321  It can support selection from text file too. Place the list of contacts in a text file & save it in your directory. Just enter the path of the file e.g. C:\contacts.txt

<b>Msg</b>	Whatever message your application will be sending e.g. system message
------------	--

## D. Send SMS Examples

**Prerequisite:** GSM modem has to be initialized successfully before any SMS can be sent out.

**Assumption:** GSM modem is connected at COM port 2.

Important: Demo text will be appended to both incoming and outgoing SMS in the trial edition.

- a. SMS to "hello world" to 6598712345.

### Command:

```
Easisms.exe /action=sendlog /port=2 /mobile=6598712345 /msg=hello world
```

- b. SMS to "hello world" to 98712345 (Singapore) and 8529022886655 (Hong Kong). The default country code has initialized to 65 (Singapore).

### Command:

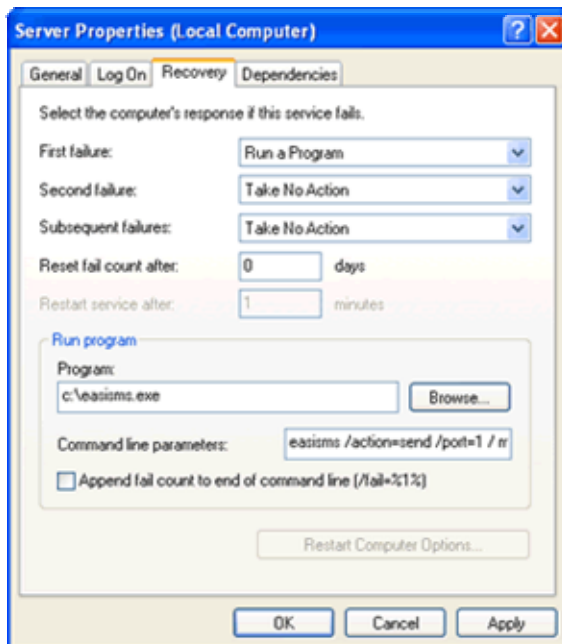
```
Easisms.exe /action=sendlog/ port=2 /mobile=98712345;8529022886655 /msg=hello world
```

- c. SMS to "你们好 How are you?" to a list of mobile numbers for a text file in the C:/ drive.

### Command:

```
Easisms.exe /action=sendlog /port=2 /mobile=C:\mylist.txt /msg=你们好 How are you?
```

- d. To send out a SMS alert when one of the Windows Service fails. Launch the Server Properties, choose RUN A PROGRAM, browse the Program file (i.e. EasiSMS) & type in the command.



### Command:

```
Easisms.exe /action=sendlog /port=2 /mobile=98712345 /msg=SQL Server Fails for Server1
```

\* To turn off output (avoid launching the DOS window), use this command **/quiet**.

### Command:

```
Easisms.exe /action=sendlog /quiet /port=2 /mobile=98712345 /msg=SQL Server Fail
```