

Lasso Settings Migrator

Migrate database settings between hosts on a Lasso Professional Server 5, 6, 7, or 8.

Export settings for import into the latest version of Lasso Professional Server.



Trademarks

Lasso, Lasso Professional Server, Lasso Development Studio, LDML, Lasso Service, Lasso Connector, Lasso Web Data Engine, and OmniPilot are trademarks of OmnikPilot Software, Inc. MySQL™ is a trademark of MySQL AB. FileMaker® Pro and related product and component names are trademarks of FileMaker, Inc. All other products mentioned may be trademarks of their respective holders.

Third Party Links

This paper may contain links to third-party Web sites that are not under the control of OmniPilot. OmniPilot is not responsible for the content of any linked site. If you access a third-party Web site mentioned in this guide, then you do so at your own risk. OmniPilot provides these links only as a convenience, and the inclusion of the links does not imply that OmniPilot endorses or accepts any responsibility for the content of those third-party sites.

Copyright

Copyright © 2004 OmniPilot Software, Inc. This paper may not be copied, photocopied, reproduced, translated or converted to any electronic or machine-readable form in whole or in part without prior written approval of OmniPilot Software, Inc.

Third Edition: February 4, 2004

OmniPilot Software, Inc.
701 S. Federal Highway
Fort Lauderdale, Florida 33316 U.S.A.
Telephone: (954) 315-9400
Fax: (954) 315-9410
Email: info@omnipilot.com
Web Site: <http://www.omnipilot.com>

Contents

Chapter 1

Introduction	4
Background	4

Chapter 2

Lasso Settings Migrator.....	6
Requirements.....	6
Installation.....	6
Migrate Database Settings.....	7
<i>Figure 1: Migrate Section</i>	9
<i>Figure 2: Migrate Results</i>	10
Export Settings.....	10
<i>Figure 3: Export Section</i>	11
<i>Figure 4: Export File Window</i>	11

1

Chapter 1

Introduction

This paper provides documentation for the Lasso Settings Migrator which is a free tool that facilitates migrating settings within Lasso Administration. Lasso Settings Migrator provides the following two capabilities:

- Migrate database settings between different hosts within Lasso Professional Server 5, 6, 7, or 8. This facilitates transitioning databases from the built-in Lasso MySQL data source to an external installation of MySQL.
- Export all Lasso Administration and Lasso security settings from Lasso Professional 5, 6, 7, or 8 in a format that is suitable for import into Lasso Professional 7 or 8. This facilitates upgrading to Lasso Professional 7 or 8 without losing any of your settings.

In addition, Lasso Settings Migrator can help when database settings need to be transitioned between any two hosts of the same type in a Lasso installation. For example, if a database is moved from one FileMaker Pro host to another. The export of settings from Lasso Administration and Lasso security can be useful for troubleshooting problems with a Lasso installation and can serve as a basic backup of Lasso's settings.

Background

Lasso Professional 5, 6, and 7 ships with a built-in data source, namely Lasso MySQL, which is used to store Lasso's internal settings, queues, caches, preferences, etc. and can also be used to store databases for solutions that are built using Lasso. Lasso Professional 5 and 6 shipped with a version of Lasso MySQL which was integrated with Lasso Service, but remained a separate application or service. Lasso Professional 7 fully incorporates Lasso MySQL into Lasso Service so they both run as a single application or service.

External MySQL

It is often desirable to use an external installation of MySQL for solution databases with any version of Lasso Professional. Using an external installation allows you to set up, monitor, and back up your solution databases separately from Lasso's internal settings. It is easier to use third-party graphical user interfaces and utilities on a standard external installation than it is to connect the same tools to the internal Lasso MySQL. Finally, some advanced capabilities of MySQL are only available if you are using a standard external installation.

The primary difficulty, which Lasso Settings Migrator is designed to mitigate, to moving solution databases from Lasso MySQL to an external installation of MySQL has been migrating the Lasso Administration and Lasso security settings from the internal host to the external host without having to re-establish any settings. See the following *Migrate* section for full details.

Moving your solution databases from Lasso MySQL to a standard external installation of MySQL is a good step to take before upgrading to the newest version of Lasso. Having your solution databases in a separate data source will ease the transition to the latest version of Lasso Professional.

Export Settings

Lasso stores all of its preferences and settings in databases within Lasso MySQL. It can be difficult to back up and restore these settings and it can be difficult to transition from one version of Lasso Professional to another preserving all of Lasso's settings.

The settings export option in this migrator allows a text file containing all of Lasso's settings to be downloaded. This text file serves as a backup for all of Lasso's settings and can be imported into the newest version of Lasso Professional in order to make upgrading easy. See the following *Export* section for full details.

Important: The export for Lasso Professional 8 should be imported into Lasso 8's Site Administration interface for the default site. This file is not designed to be imported into Lasso 8's Server Administration interface.

2

Chapter 2

Lasso Settings Migrator

Lasso Settings Migrator ships as a folder of format files for Lasso Professional 5, 6, 7, or 8.

This section includes the system requirements for the migrator, installation instructions, and documentation of the *Migrate* and *Export* sections.

Requirements

Lasso Settings Migrator can be used on any installation of Lasso Professional Server 5, 6, 7, or 8 (or with the single-user version of Lasso that ships with Lasso Studio 6, 7, or 8). You must have permission to upload format files and the global administrator username and password for the Lasso Professional installation.

Installation

Installation instructions are provided for each version of Lasso Professional Server and platform.

- 1 Download the Lasso Settings Migrator from OmniPilot's Web site and decompress the archive.
- 2 Copy the folder LassoSettingsMigrator into the Lasso folder within your Web serving root. The location of the Lasso folder depends on which Web server connector you're using. The list below includes the default locations.

Mac OS X Apache – /Library/WebServer/Documents/Lasso/

Mac OS X WebSTAR V – /Applications/4DWebSTAR/WebServer/DefaultSite/Lasso/

Windows IIS – C:\\inetpub\\wwwroot\\Lasso\\

Red Hat Linux – /var/www/html/Lasso/

- 3 Access the LassoSettingsMigrator through your Web browser. If you are accessing Lasso Professional on a different machine from your Web browser you will need to replace localhost in the following URL with the host name or IP address of the machine with Lasso Service.

`http://localhost/Lasso/LassoSettingsMigrator`

Enter the global administrator username and password when prompted.

- 4 Follow the instructions in the following section to migrate database settings from one host to another or to export the Lasso Administration settings.

Migrate Database Settings

The *Migrate* section allows Lasso Administration database settings to be migrated from one data source host to another. This section facilitates the following:

- Migrate databases from the internal Lasso MySQL data source to an external installation of MySQL. An example of performing this migration is included below.
- Migrate databases between two hosts of the same data source. For example, databases can be migrated between two FileMaker Pro installations.

Note: The Migrate section does not move any data or any actual database files. The DatabaseBrowser.LassoApp can be used to move data between databases. See the documentation of the DatabaseBrowser.LassoApp in the Lasso Professional Server 8 Setup Guide for more information.

Important: Always perform a backup of the settings in Lasso Administration before performing a migration. For Lasso Professional 8, a backup can be created using the Export section in the Lasso Settings Migrator. There is no undo option for migrated databases, however, they can always be migrated back to their original host.

To migrate databases from Lasso MySQL to an external MySQL:

- 1 Install MySQL according to the instructions for your platform. Downloads for most operating systems can be found at the MySQL Web site:

`http://www.mysql.com/`

Note: Installing and configuring the remote installation of MySQL is beyond the scope of this paper.

- 2 Stop Lasso Service (and Lasso MySQL) using the appropriate command for your version and platform:

Mac OS X – Open the Tools folder within the Lasso Professional application folder and run the `stopLassoService.command` file. For Lasso Professional 5 and 6 also run the `stopLassoMySQL.command` file.

Windows – Open the Services control panel and stop the `LassoService`. For Lasso Professional 5 and 6 also stop the `LassoMySQL` service.

Linux – Open the Tools folder within the `/usr/local/Lasso Professional 7/` folder and run the `stopLassoService.sh` file. For Lasso Professional 6 also run the `stopLassoMySQL.sh` file.

- 3 Move the desired databases from the appropriate folder within your Lasso Professional installation to the external installation of MySQL.

Lasso Professional 7 – The databases are in the `LassoMySQL/databases/` folder within the Lasso Professional 7 application folder.

Lasso Professional 5 and 6 – The databases are in the `LassoMySQL/var/` folder within the Lasso Professional application folder.

If necessary, configure the MySQL permissions according to the instructions provided with the installation. Usually, a username and password will be established which allow Lasso to access the desired databases.

Note: Installing and configuring the remote installation of MySQL is beyond the scope of this paper.

- 4 Start Lasso Service (and Lasso MySQL) using the appropriate command for your version and platform).

Mac OS X – Open the Tools folder within the Lasso Professional application folder and run the `startLassoService.command` file.

Windows – Open the Services control panel and start the `LassoService`. For Lasso Professional 5 and 6 also start the `LassoMySQL` service.

Linux – Open the Tools folder within the `/usr/local/Lasso Professional 7/` folder and run the `startLassoService.sh` file.

- 5 Access Lasso Administration through your Web browser. If you are accessing Lasso Professional on a different machine from your Web browser you will need to replace `localhost` in the following URL with the host name or IP address of the machine with Lasso Service.

`http://localhost/Lasso/Admin.LassoApp`

Enter the global administrator username and password when prompted. Set up a host in the **Setup > Data Sources > Hosts** section for the external MySQL installation. Use the username and password which was set up in MySQL above.

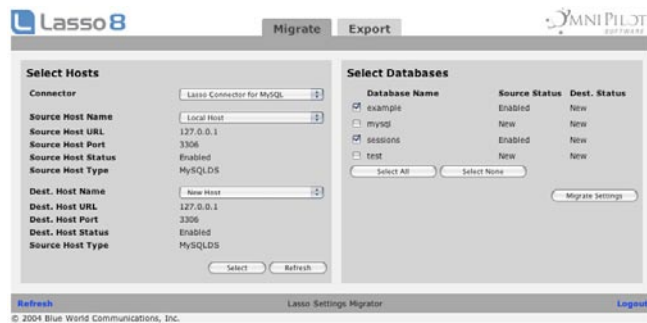
- 6 Access the LassoSettingsMigrator through your Web browser. If you are accessing Lasso Professional on a different machine from your Web browser you will need to replace localhost in the following URL with the host name or IP address of the machine with Lasso Service.

`http://localhost/Lasso/LassoSettingsMigrator/`

Enter the global administrator username and password when prompted.

- 7 Select the *Migrate* tab.

Figure 1: Migrate Section



- 8 In the Select Hosts panel, select Lasso Connector for Lasso MySQL from the Connector menu and Lasso MySQL from the Source Host Name menu.
- 9 Select the desired external host from the Dest. Host Name menu. In the example above a new host Destination has been selected as the destination host.

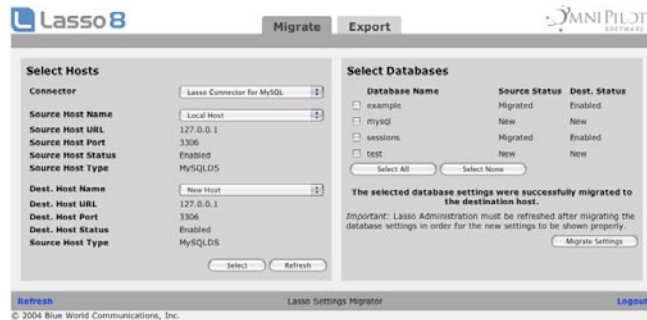
The Select Databases panel show a list of all the databases on the source host including their status on both the source host and the destination source. In the example above the example database has been checked. The settings for this database will be migrated to the destination host.

Any databases that are present on the source host but not on the destination host are shown with a status of n/a in the Dest. Status column. If the settings for these databases are migrated then the actual database files must be moved to the destination host in order for them to continue to work.

Any databases that are present on the destination host but not on the source host are listed in the note at the bottom of the panel. The settings for these databases will not be modified.

- 10 Select the Migrate Settings... button and confirm the migration in the dialog box that appears. The Lasso Settings Migrator performs the requested modifications and refreshes with the new status of the databases on the source and destination hosts.

Figure 2: Migrate Results



In the example above, the example database now has a status of Migrated (for the source host and a status of Enabled on the destination host. Lasso will now access this database from the external MySQL host.

How the Migrator Works

The migrator performs the following steps to move a database from one host to another. These steps are performed for each database which is being migrated.

- The settings for the database on the destination host are removed. This includes all database preferences and security settings.
- The preferences record for the databases is adjusted to point to the destination host. Since all of the table, field, and security settings reference the database record there is no need to modify any of them.
- A new, disabled record is created for the database on the source host. This database has an alias name which includes {migrated} so the databases that have been migrated can be found easily.

Export Settings

The **Export** section allows a text file containing all of the settings for a Lasso Professional installation to be exported.

- The export can be imported into a fresh installation of Lasso Professional 7 or 8 to help facilitate an upgrade.
- A backup of the settings of Lasso Professional 7 or 8 can be made. These settings can then be restored from backup if necessary.

Important: The export file includes passwords for data sources in plain text and may include additional sensitive data. See below for full details about what is included in the export.

To export all of the settings from Lasso Professional:

- 1 Access the LassoSettingsMigrator through your Web browser. If you are accessing Lasso Professional on a different machine from your Web browser you will need to replace localhost in the following URL with the host name or IP address of the machine with Lasso Service.

`http://localhost/Lasso/LassoSettingsMigrator/`

Enter the global administrator username and password when prompted.

- 2 Select the **Export** tab.

Figure 3: Export Section



- 3 Select the Export for LP7... button or the Export for LP8... button.
- 4 A file named Export_LP7_YYYYMMDDHHMMSS.txt or Export_LP8_YYYYMMHHMMSS.txt will be created on your desktop.

Important: The export for Lasso Professional 8 should be imported into Lasso 8's Site Administration interface for the default site. This file is not designed to be imported into Lasso 8's Server Administration interface.

Figure 4: Export File

```

#[version: 8.0]
#Lasso Security Settings
#Copyright 2003-2004 OmniPilot Software, Inc.
#<a href="http://www.omnipilot.com/">http://www.omnipilot.com/</a>
#
#
#   Use the browser's "Save" command to save this text into a file.
#
#   The security settings can later be imported into Lasso Administration using
#   the "Import..." command in the Setup > Global > Import/Export section.
#
#   Do not edit this file directly.  No user-servicable parts inside.
#
#
[lasso_internal.global_prefs: id, store_key, data, size, modified]
{"1","lasso_file_extensions",".bmp .cmxk .gif .htm .html .inc .incl .jpg .lasso .lassoapp .pdf .png .psd",
{"2","log_critical_dest","",""},
{"3","log_warning_dest","",""},
{"4","log_detail_pref","1",""},
{"6","lasso_smtp_password","",""},
{"7","lasso_smtp_host","",""},
{"8","lasso_smtp_port","25",""},
{"9","lasso_admin_email","",""},
{"10","lasso_smtp_username","",""},
{"11","lasso_site_initialized","Y",""},
{"12","lasso_site_admin_url","http://orbit.local:80/lassoapps.0/siteadmin/default.lasso","",""}
[/global_prefs]
[lasso_internal.jdbc_drivers: ]
[/jdbc_drivers]
[lasso_internal.security_datasources: id, id_site, name, enabled, modified]
{"1","1","SQLiteConnector","Y",""},
{"2","1","FMSearchDataSource","Y",""},
{"3","1","FMSEnrichmentDataSource","Y",""},
{"4","1","MySQLDS","Y",""}
[/security_datasources]

```

Note: The export file is saved by the Web browser to the local machine. The export file is not saved on the machine with Lasso Service.

Export File Contents

The contents of the export file is a simple dump from each of the tables that contain settings for Lasso Professional. The export file should never be edited by hand. The export file includes the following data:

- All of the Lasso security settings from the `lasso_internal` database.
- The database browser preferences from the `lasso_admin` database.
- The scheduled events, maintenance events, and email preferences from the site database.

The export does **not** contain the following data:

- Lasso Professional serial number.
- Global administrator username and password.
- Default tag permissions. Only tag permissions which differ from the defaults are placed in the export file.
- The contents of the email queue, errors table, and sessions table from the site database.

Note: The serial number and global administrator username and password must be entered in the Initialization screen after installing a new copy of Lasso Professional. Then, the *Global > Setup > Import/Export* section can be used