



PLANT VIEW INSTALLATION GUIDE

System requirements.....	1
Registration and activation	1
How to obtain the activation code:.....	2
Installation.....	2
Subsequent Installations.....	4
Modifying or removing applications	4
Backup and Restore Procedures.....	4

System requirements

Hardware	
CPU	Pentium, compatible or upper
RAM	64 Mb
Hard Disk	300 Mb
Video	Vga or upper
Mouse	Required (necessary for editing, recommended for runtime)
CD-Rom	Recommended for installation and subsequent modifications. Plant View can also be installed from the CD drive of another networked PC.
Software	
Operating system	Microsoft Windows 95/98/ME/NT/2000/XP
	Win NT 4.0 SP6 or upper, Internet Explorer 4.01 SP2 or upper

Registration and activation

After Plant View has been installed, the application runs in demo mode.

With Plant View running in demo mode, reminder windows periodically appear on the screen advising you to register and activate the software. Your Plant View copy is NOT licensed and NOT free to be used until registration occurs. A single Plant View copy is licensed to be installed in one workstation only. Changing computer or changing some important components (the hard disk, for instance) will cause the license to be invalid and you will need to ask Fast Automation for a new activation.

By **Registering** your Plant View copy you are entitled to receive technical assistance as well as information about the product and about new releases. Registration can be made online through the Fast Automation website (www.fastautomation.it) or by sending the form included in the Plant View package.

To complete the **activation** process, after Plant View has been installed, you need to get your own system key (following the procedure described below) and then send it to Fast Automation. Fast Automation will then send you back the Enable Key code.

For further installations of Plant View on other workstations or on the same workstation after some components have changed, you will need to ask Fast Automation for a new Enable Key code.

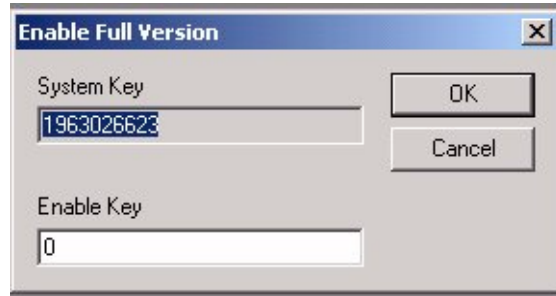


How to obtain the activation code:

From the Plant View folder that appears on your desktop after the program has been installed, run **Plant View Editor**.

From the main menu (F12) select **Help – Enable Full version**

The **Enable Full version** dialog box will appear as shown here on the right.



Communicate the **System Key** number to Fast Automation and Fast Automation will send you the Enable key code, to be typed in the **Enable Key** field. Then press ok and the program will be automatically activated.

Installation



To start the installation, after download unzip the PlantView.zip file and run Setup.exe from the Setup folder.

The first page is the installation software presentation. Press Next to proceed.

The second page asks you to read carefully and to accept the License Agreement. In order to install and use Plant View it is mandatory to fully accept the license agreement (selecting Yes).

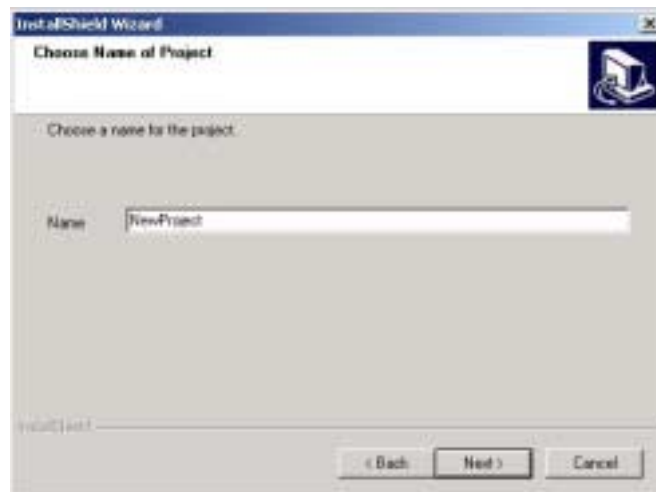
Choose Name of Project

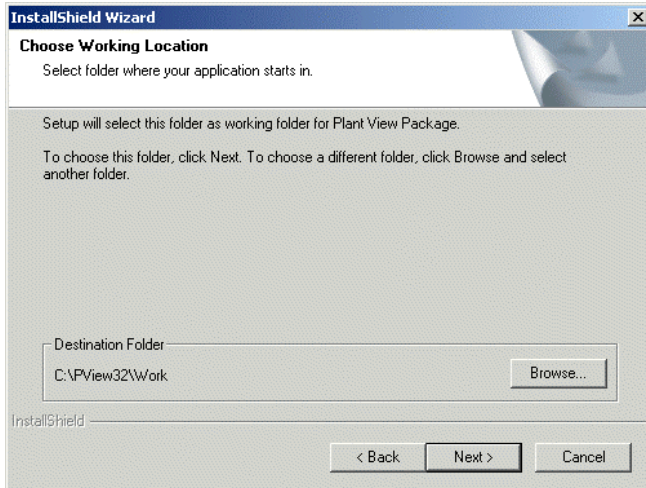
The following page requires you to type the name which will be used for the new project, for instance “New project” .

This name will be used to create a folder on the desktop (called, in this example, Plant View – New Project) which will contain shortcuts to all executable files.

In case of two (or more) projects on a single workstation, you can repeat the installation procedure and change the project name, in order to get another folder on the desktop with the shortcuts to the other project.

Press Next to continue.





Choose Working Directory

Select here the working directory (Destination Folder) where all the project files will be saved and stored.

With Plant View it is possible to create several projects on a single workstation (by repeating the installation procedure).

Each project will have its own working directory.

See the “Choose Name of Project” section above to know how to get another folder on the desktop with the shortcuts to other project.

Press Next to continue.

Setup Type

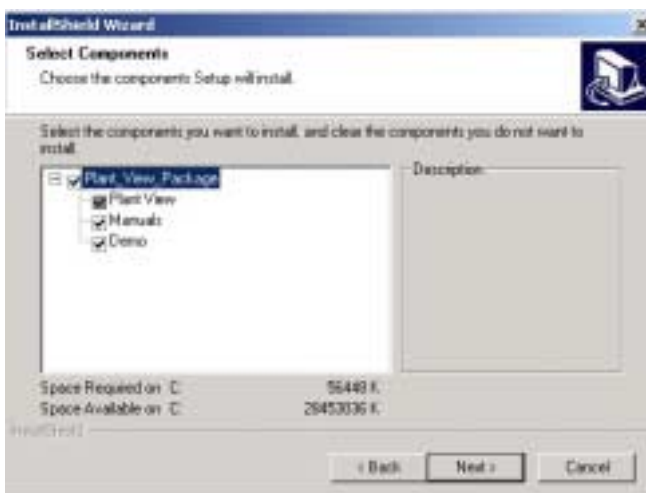
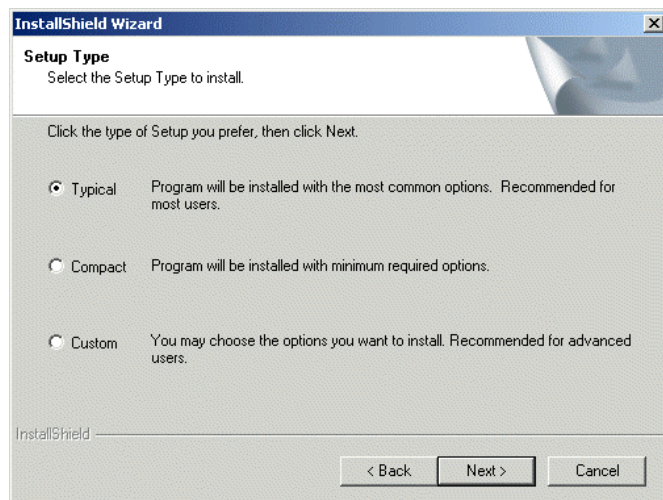
Select the installation type:

Typical: complete installation, including all the Plant View HMI – SCADA, manuals and demo project (about 100 Mb).

Compact: like Typical, except for the Demo project.

Custom: allows you to select which components to install, as shown in next figure.

Press Next to continue.



If you select the custom installation option, you will have access to the dialog box where you can choose the components to install.

Plant View: this is the minimum package that you need to install in order to create a supervisory tool (it can not be excluded).

Manuals (User Guides): user manuals in .pdf format (Acrobat Reader)

Demo: a complete supervision example .

After you have pressed the Next button, installation starts. Please wait until the “Install Shield Wizard Complete” dialog box appears.

If the installation procedure has been completed correctly, the folder Plant View – New Project should appear on the desktop and the “Programs” menu (off the “Start” main menu) should contain the link to Plant View.

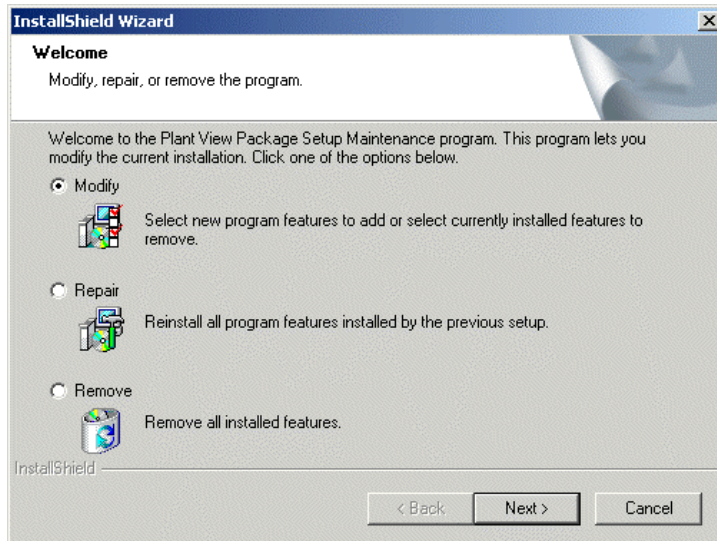


Subsequent Installations

It is possible to effect a new installation even with different characteristics. You just have to repeat the installation procedure choosing a different project name (for instance, New Project2) and a different working directory.

Modifying or removing applications

To modify or remove all or some package applications, run Setup.exe or choose Add/Remove application from the Control Panel until the following dialog box appears:



Choose **Modify** to add or remove package modules and to perform subsequent installations.
Choose **Repair** to reinstall damaged components.
Choose **Remove** to completely remove the installed application

Backup and Restore Procedures

In order to Copy (Backup) a project, copy the whole contents of the working directory in a storage support (CD).

To Restore a project, copy the whole contents of the storage support (CD) in the working directory.